

# Aziscohos Dam

Plans  
And  
Construction Photos

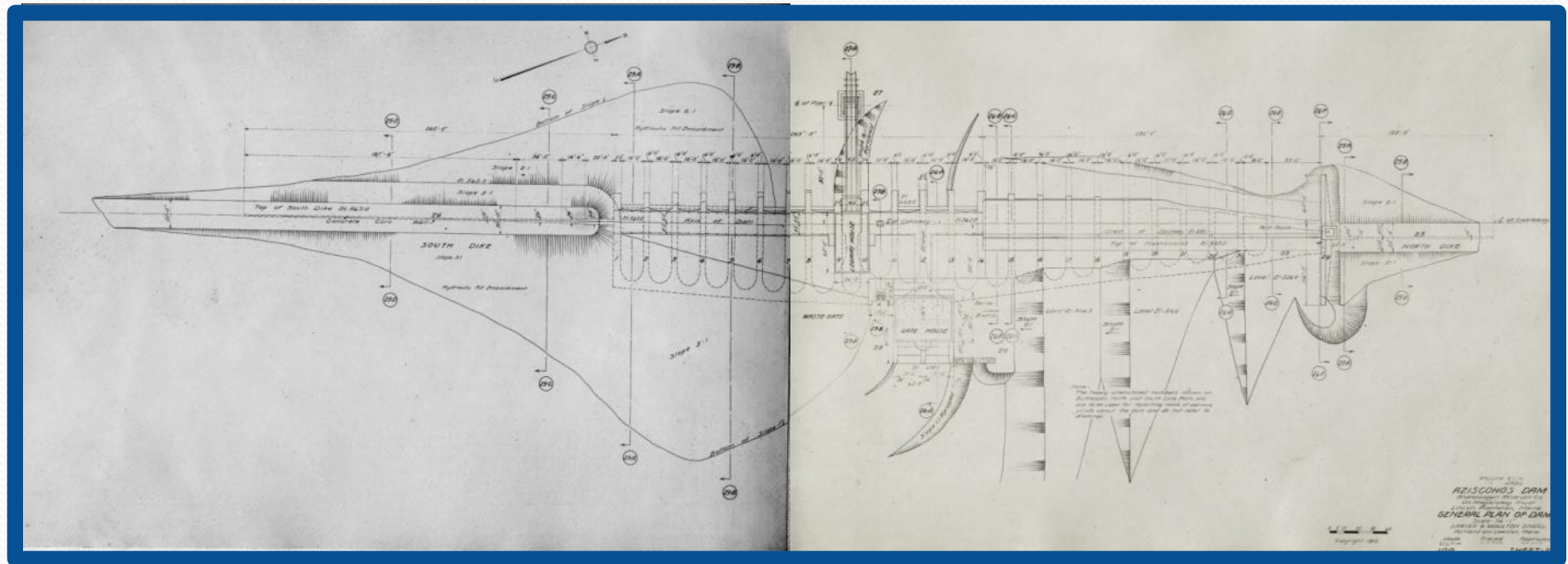
# Aziscohos Dam

Part 1

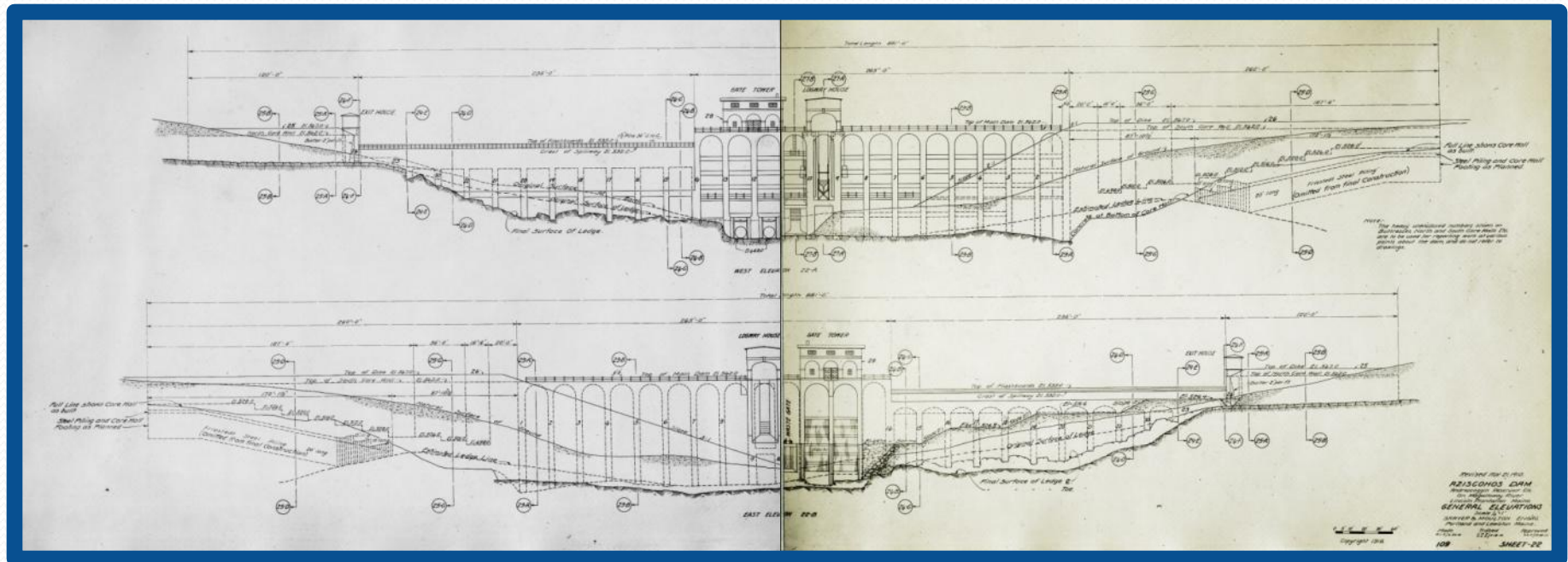
The Plans

# General Plan of Dam

(5/11/1910)



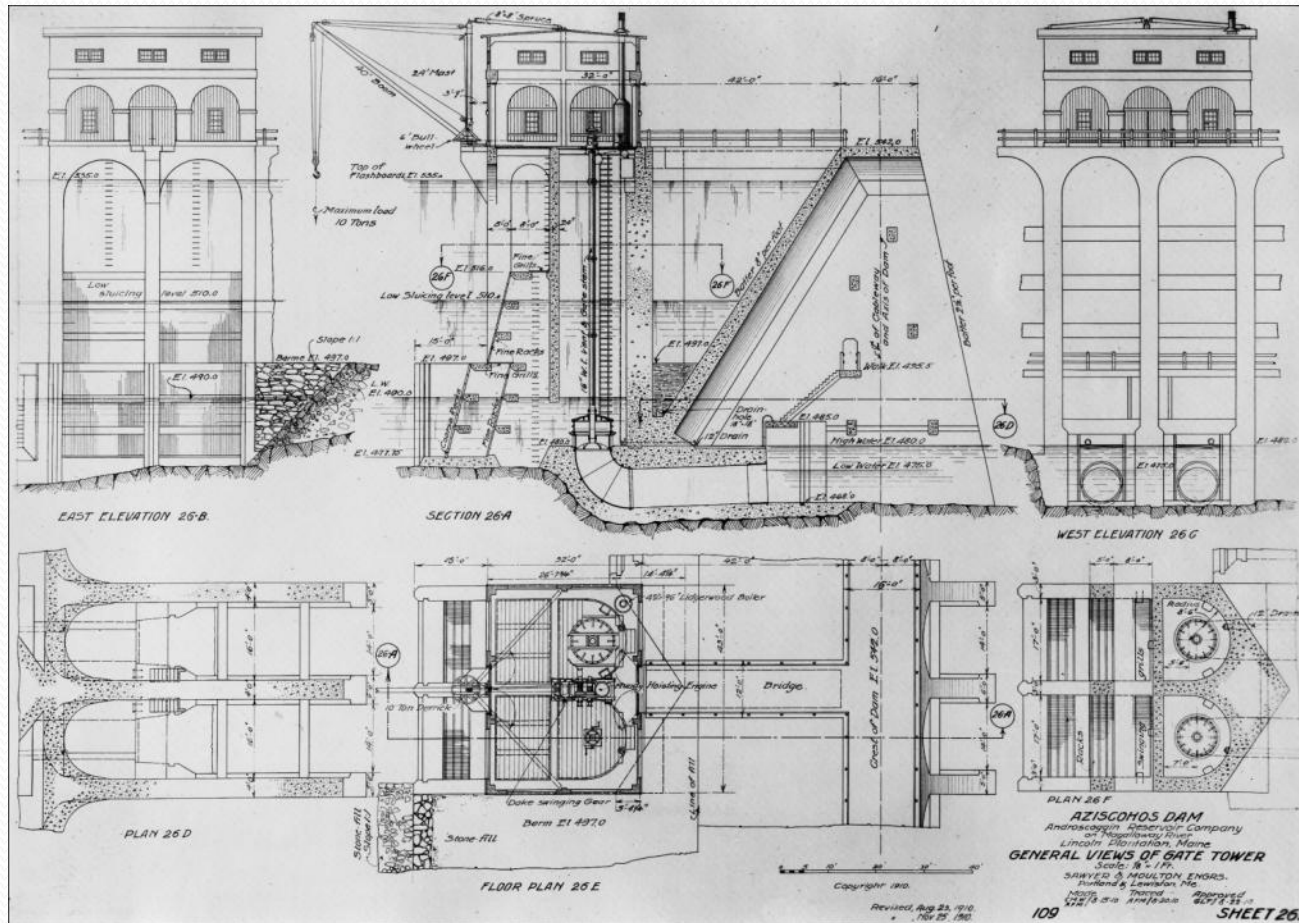
(5/18/1910)



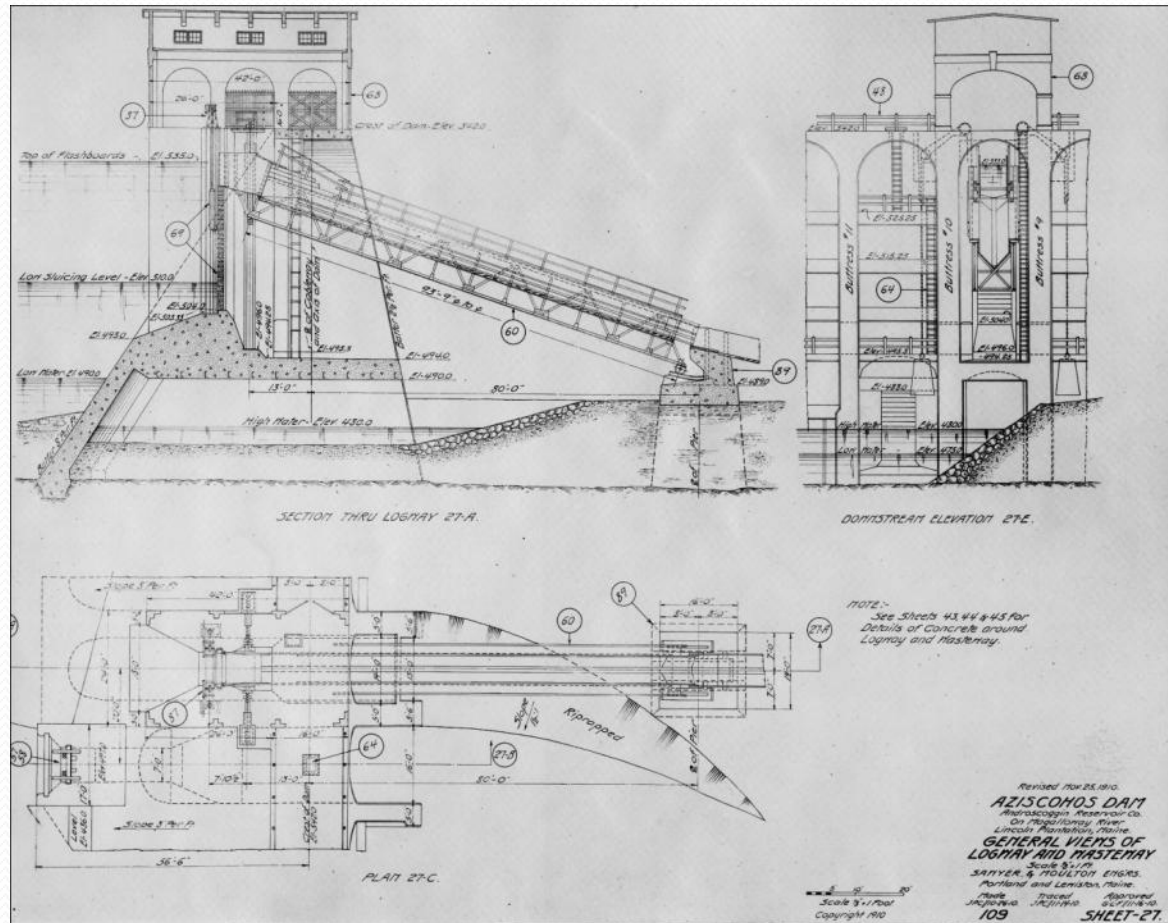


# General Views of Gate Tower

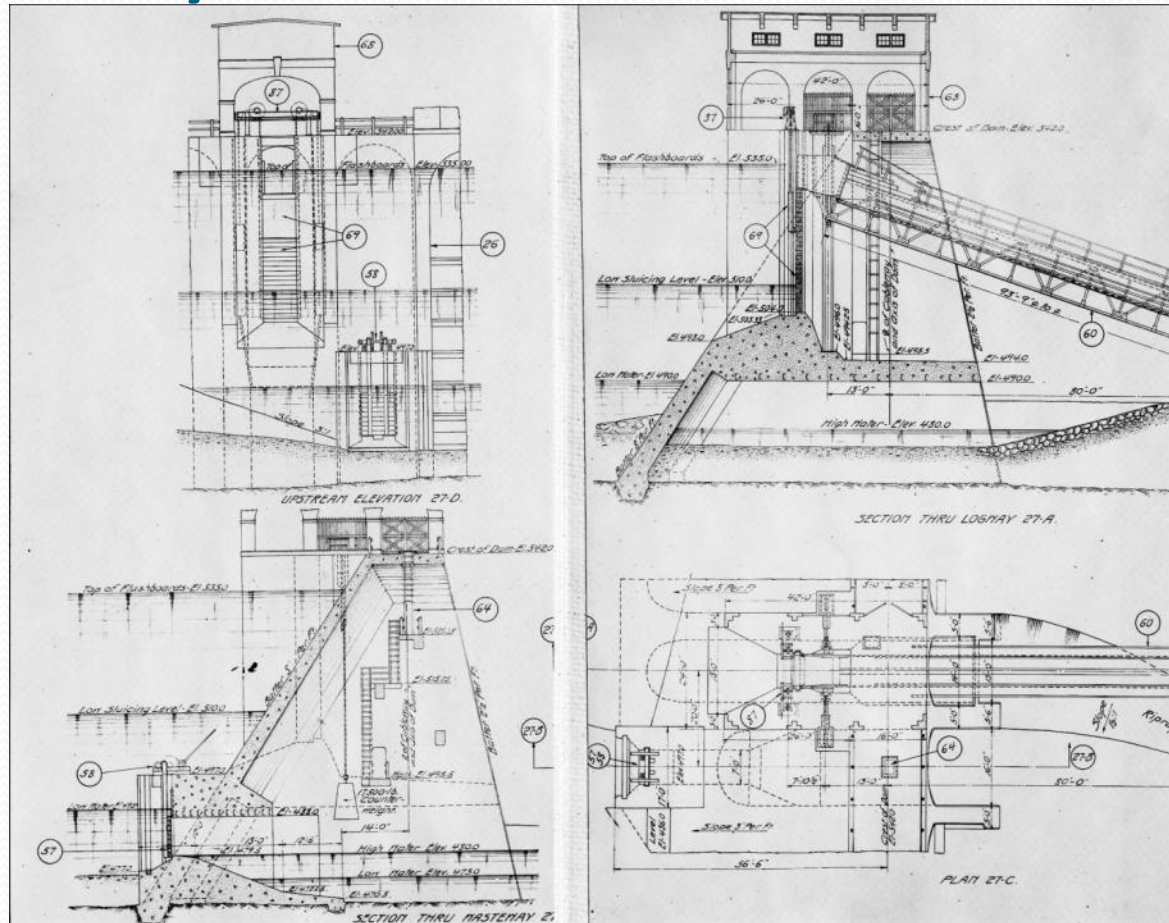
(8/20/1910)



# General Views of Logway and Wasteway (11/16/1910)



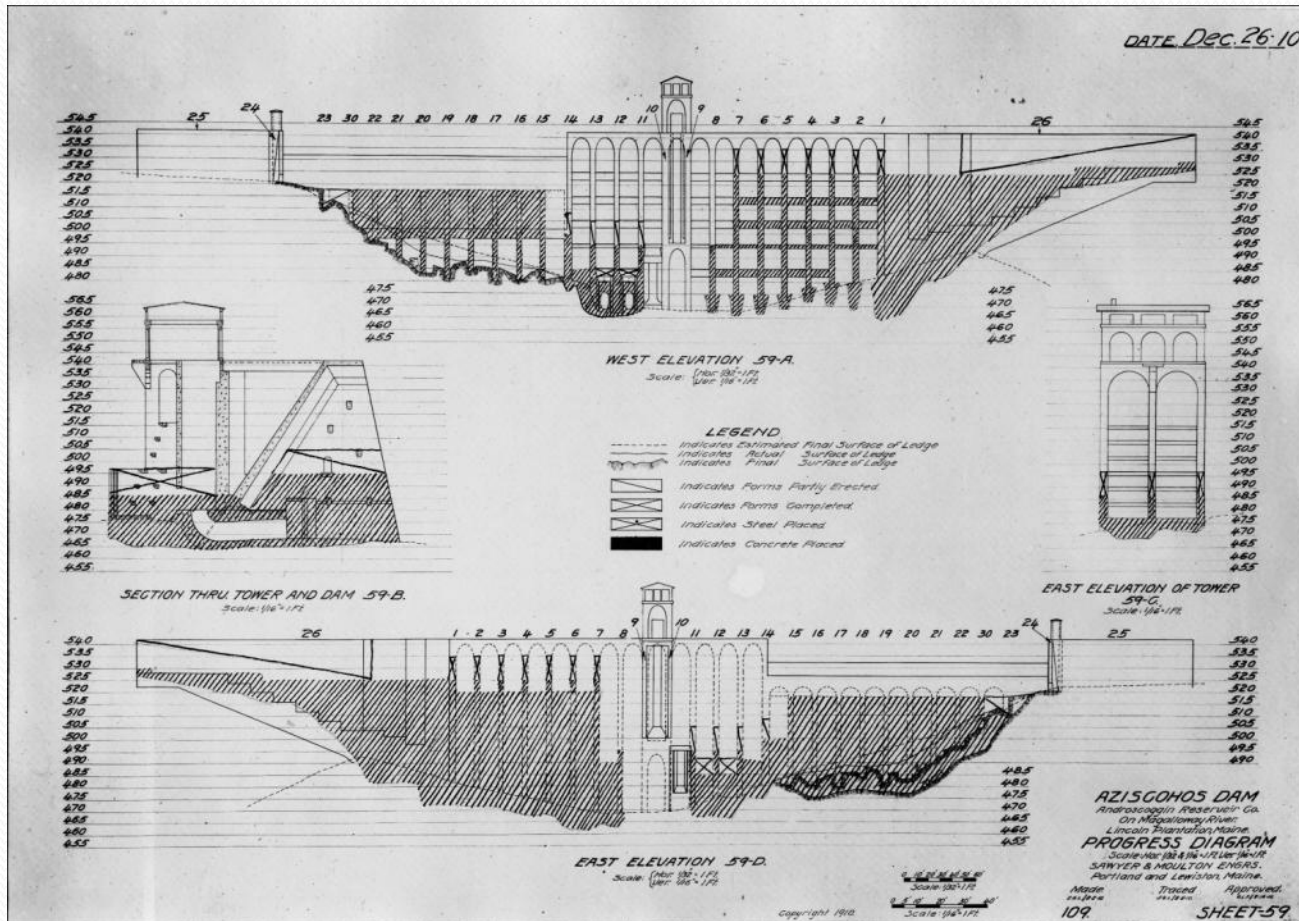
# General Views of Logway and Wasteway, Cont.





# Progress Diagram

(12/26/1910)



# Aziscohos Dam

Part 2

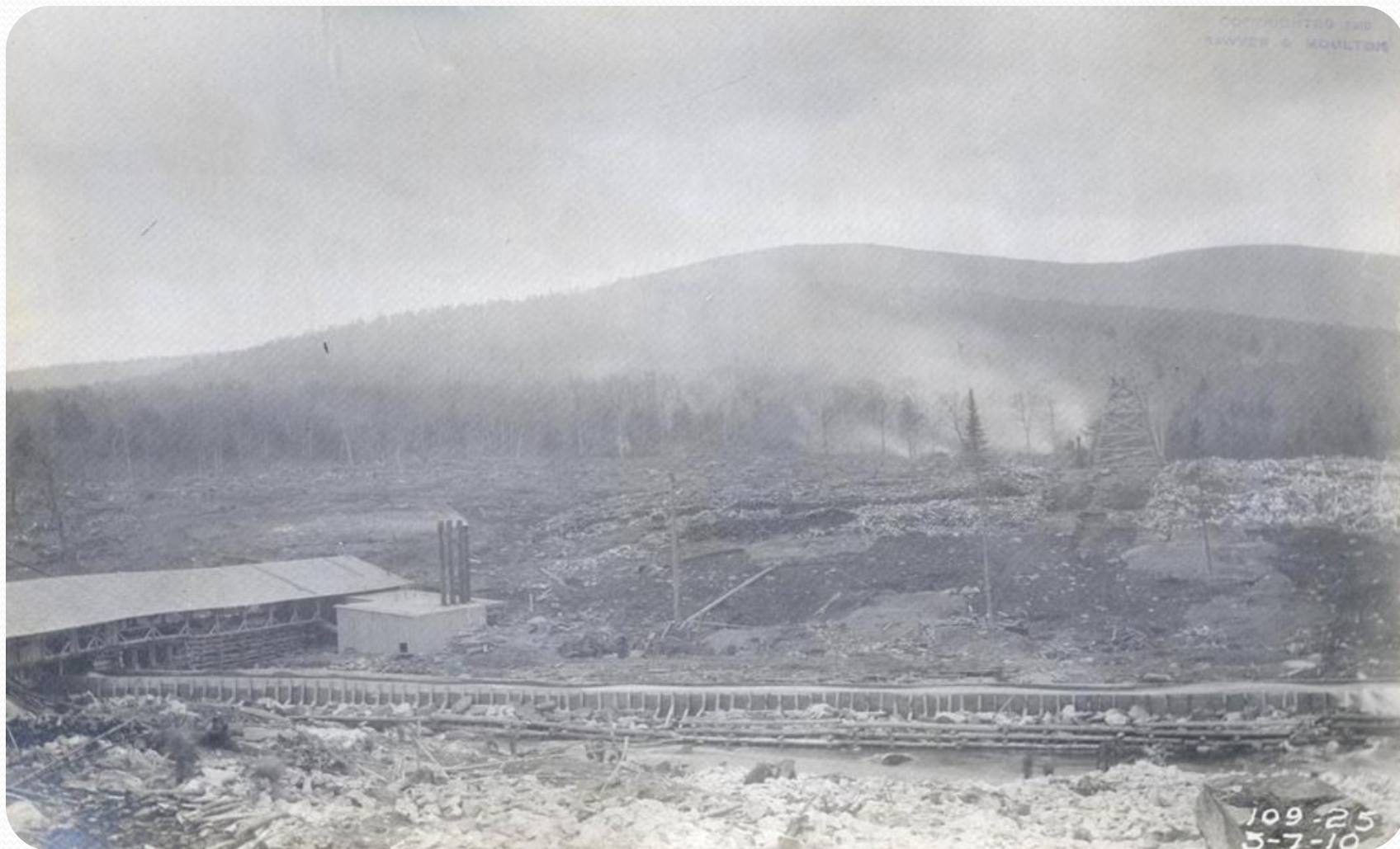
Construction Photographs  
(1910 -1912)

Panoramic view of dam site near station 'L' looking north April 28, 1910





View near Plant No. 1 looking south to old dam  
May 7, 1910



Copyrighted by  
NEWYER & MOUNTAIN

109-25  
5-7-10  
2-3-10  
100-52



View near station 'D' looking south into core wall trench  
Sluicing Giant in operation (May 28, 1910)



View of sand washer flume, looking east toward old dam May 28, 1910







View looking south into south core trench

Note vertical cuts and character of material in bank June 13, 1910



109-66  
6-13-10

6-13-10  
109-66



View east of station 'K' looking northeast across river at spillway excavation  
June 16, 1910



109-68  
6-16-10  
109-98

View east of station 'H' looking south along quarry track  
Note sand bumpers at lower end of tracks June 16, 1910





View east of station 'J' looking north at spillway excavation. Crosses indicate seams of rotten ledge underlying sound ledge June 16, 1910



109-70  
6-16-10  
9-18-10  
102-10



View near station 'K' looking southeast at excavation for buttress No.1 Old dam and boiler house No. 2 in background June 23, 1910



COPYRIGHTED 1910  
SAWYER & MOULTON

109-73  
6-23-10  
109-73

View taken on center line opposite station 'J' looking northeast into spillway excavation  
Note the seamy ledge and strata of rotten rock and earth June 24, 1910



109-74  
6-24-10  
109-74



View near buttress No. 1 looking west into trenches for main dam  
July 3, 1910





View near station 'K' looking northeast at main dam excavation  
July 13, 1910



View near station 'K' looking east at main dam excavation  
Old dam and power plan No. 2 in background July 13, 1910

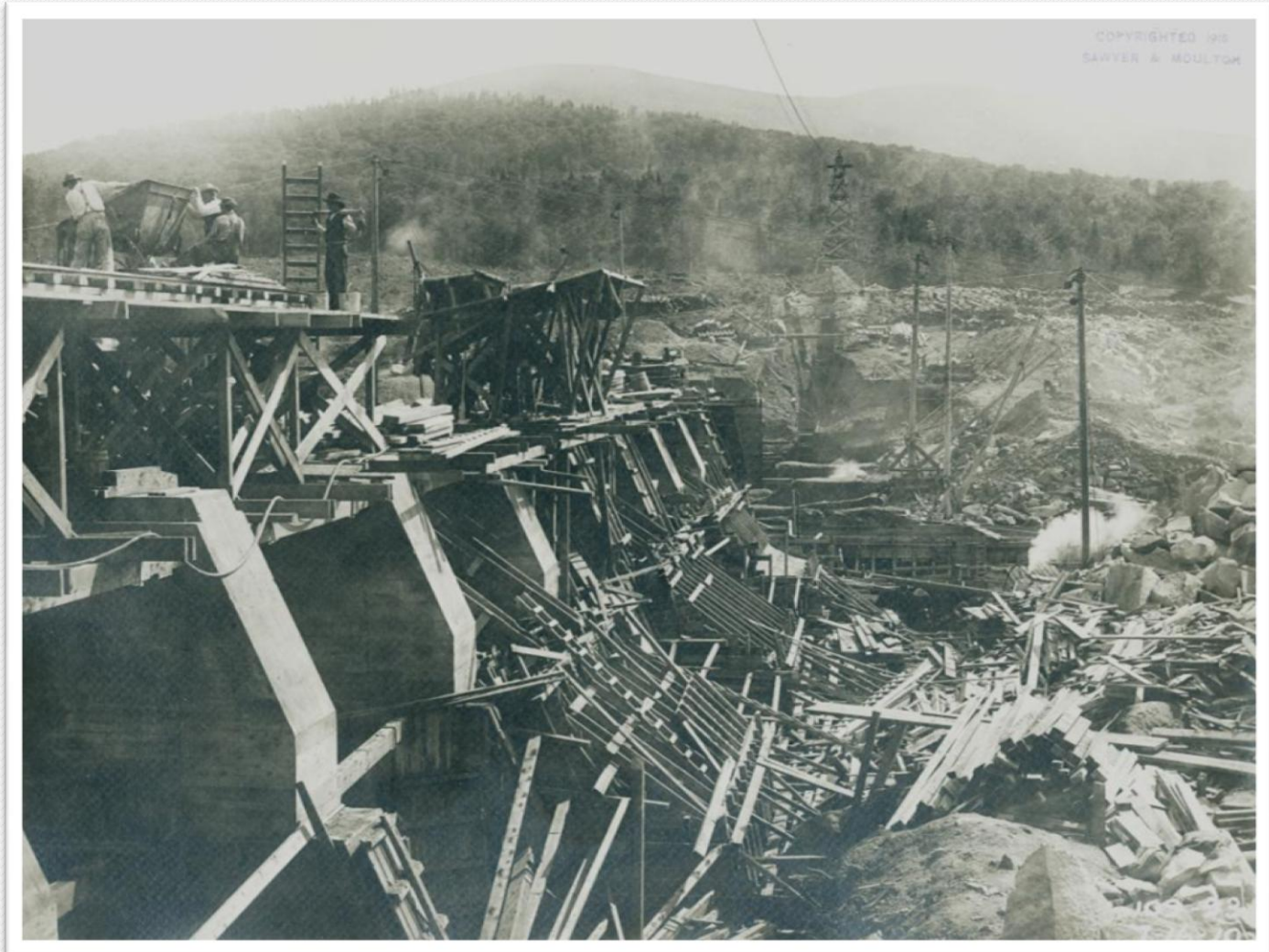




View looking south along face of spillway  
Placing concrete from tracks July 16, 1910



View looking south at lower side of spillway





View east of buttress No. 15 looking northwest July 18, 1910



View at east end of Abbott Brook dyke looking west toward  
borrow pit August 27, 1910





View at west end of Abbott Brook dyke looking east  
August 27, 1910



View from mixer platform looking south at spillway construction  
August 27, 1910





View looking south at upstream slope of spillway August 27, 1910



View from below saw mill looking east toward dam  
September 20, 1910



COPYRIGHTED 1910  
SAWYER & MOULTON

105-109

9-20-10

2-50-10

102-103



View on center line of Abbott Brook dike looking north  
Grubbing completed September 24, 1910

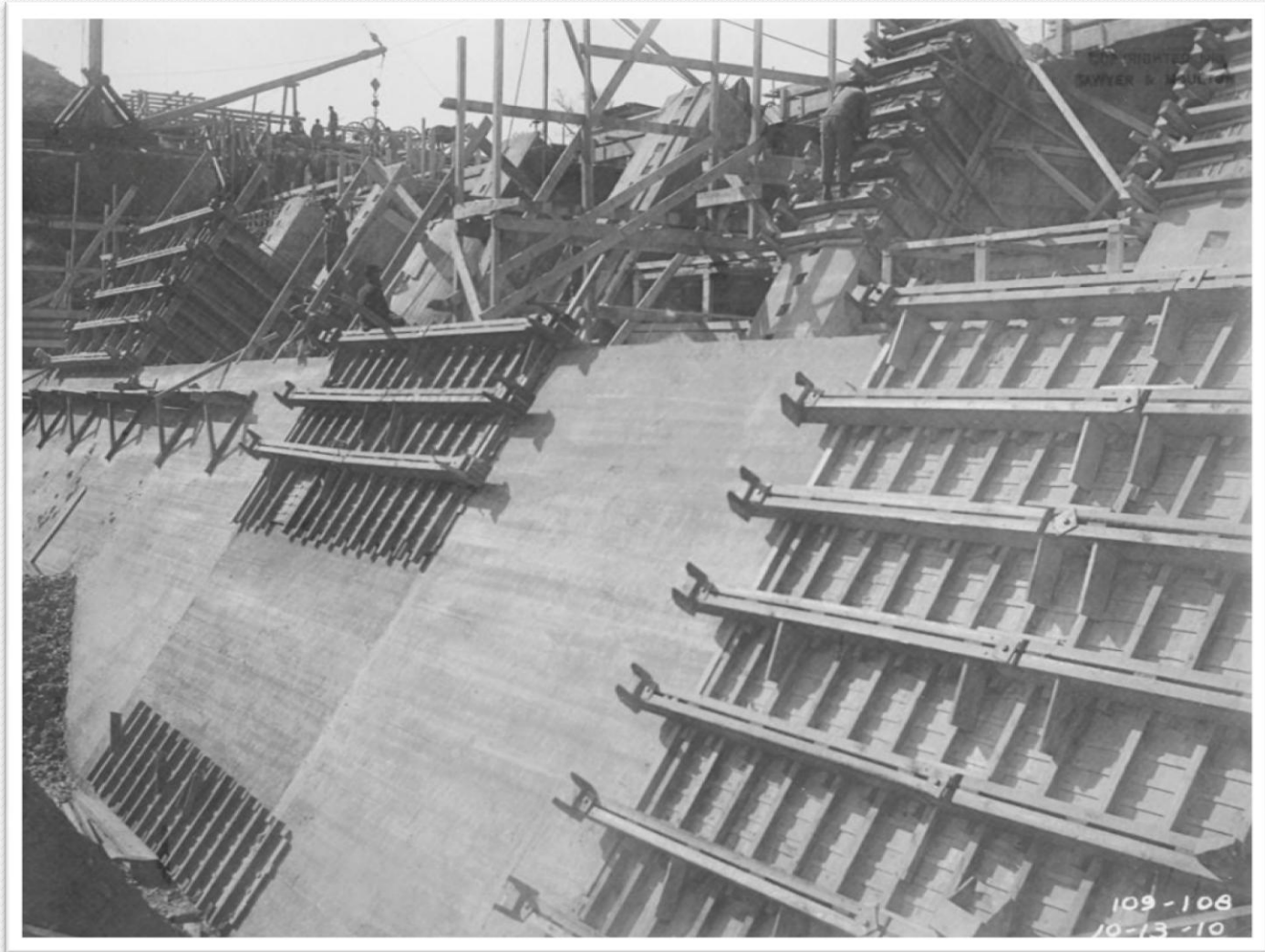


COPYRIGHTED 1910  
SAWYER & MOULTON

103-109  
9-24-10  
2-54-10  
103-102



View above buttress No. 9 looking southwest toward buttress No. 1 along face of main dam October 13, 1910



From west side dike looking southeast October 13, 1910



109-112  
10-13-10  
109-115



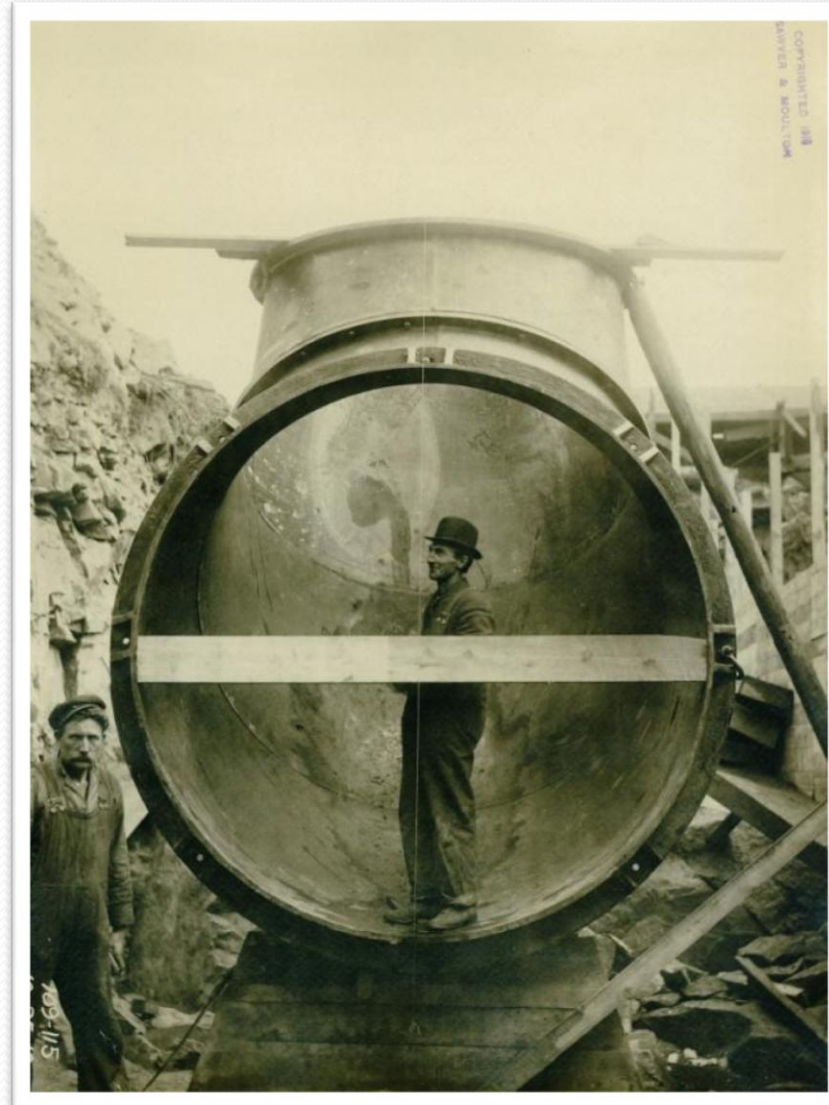
Looking upstream toward dam construction, spillway at left  
October 25, 1910



SAWYER & MOULTON

109-114  
10-25 10  
10-52 10  
103-114

North outlet tube in place looking east October 1910





North outlet tube set, concrete being placed October 29, 1910



View from top of south cable tower looking northeast up river  
November 7, 1910





Looking south west from buttress No. 14 showing back fill at face of dam  
November 9, 1910



View near sawmill looking east through gap in dam  
November, 1910

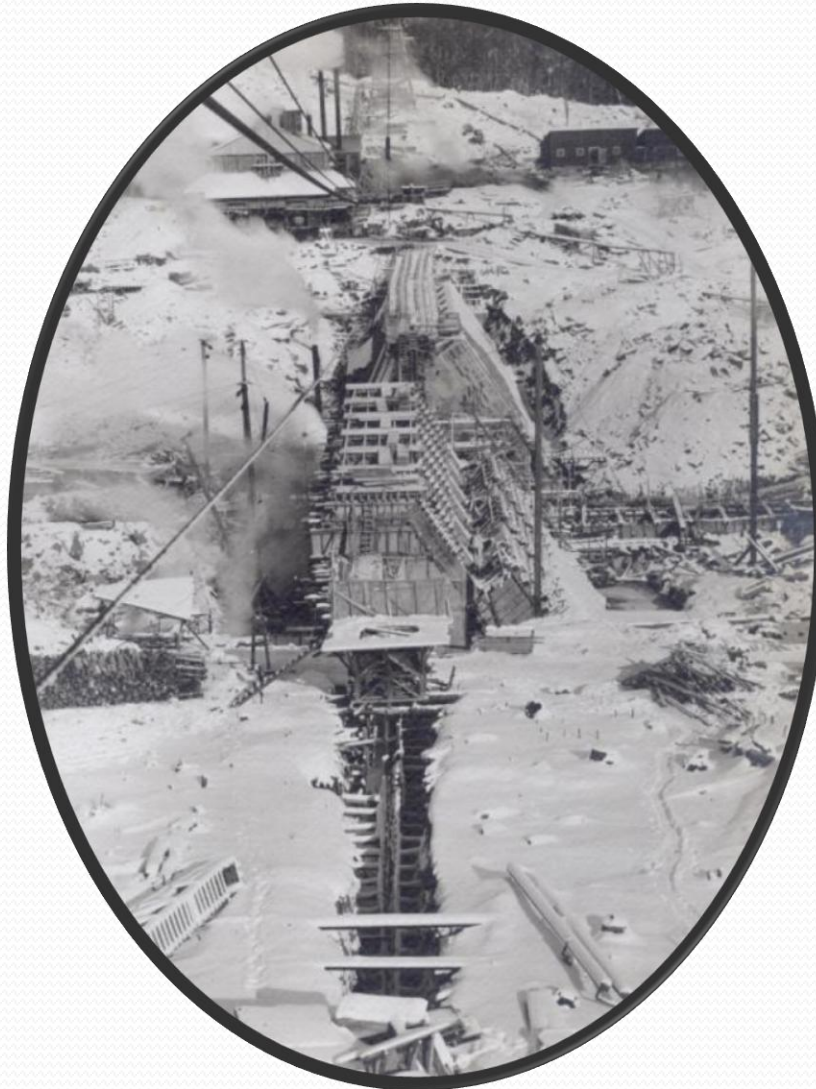




View in front of buttress No. 14 looking southwest at face of main dam  
November 21, 1910



View from top of south cable tower looking north on center line of dam  
November 7, 1910





View from top of stone bins looking south



View from top of old dam opposite buttress No. 11  
Looking west into tower construction November 21, 1910





Looking southeast toward dam February 28, 1911



Upstream view looking northwest toward gate tower March 13, 1911





View Looking east from a point 100 feet south of sawmill  
March 19, 1911



South end of Abbott Brook dike, looking northeast April 3, 1911

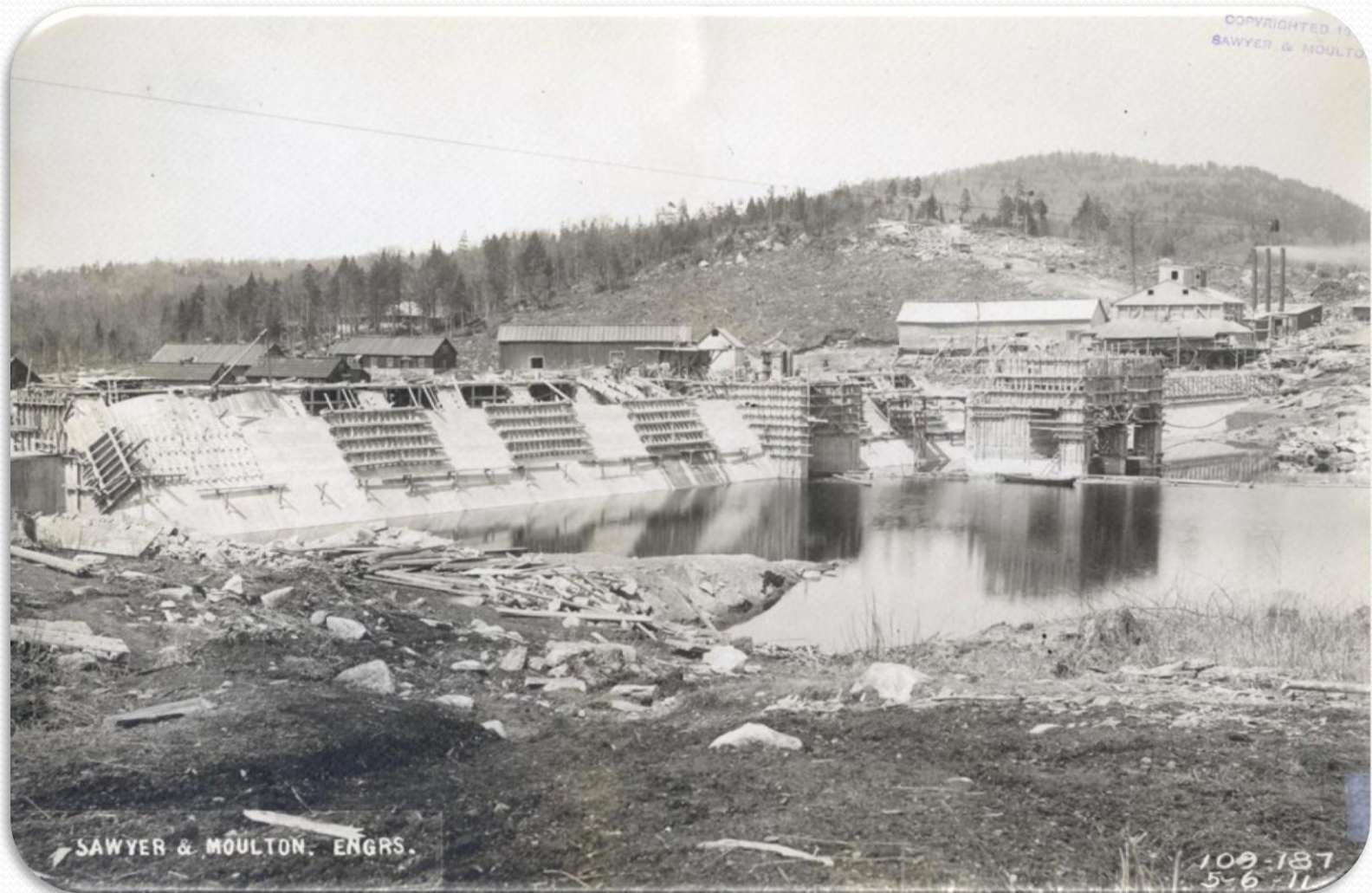




Spillway looking north from buttress No. 14 April 1911

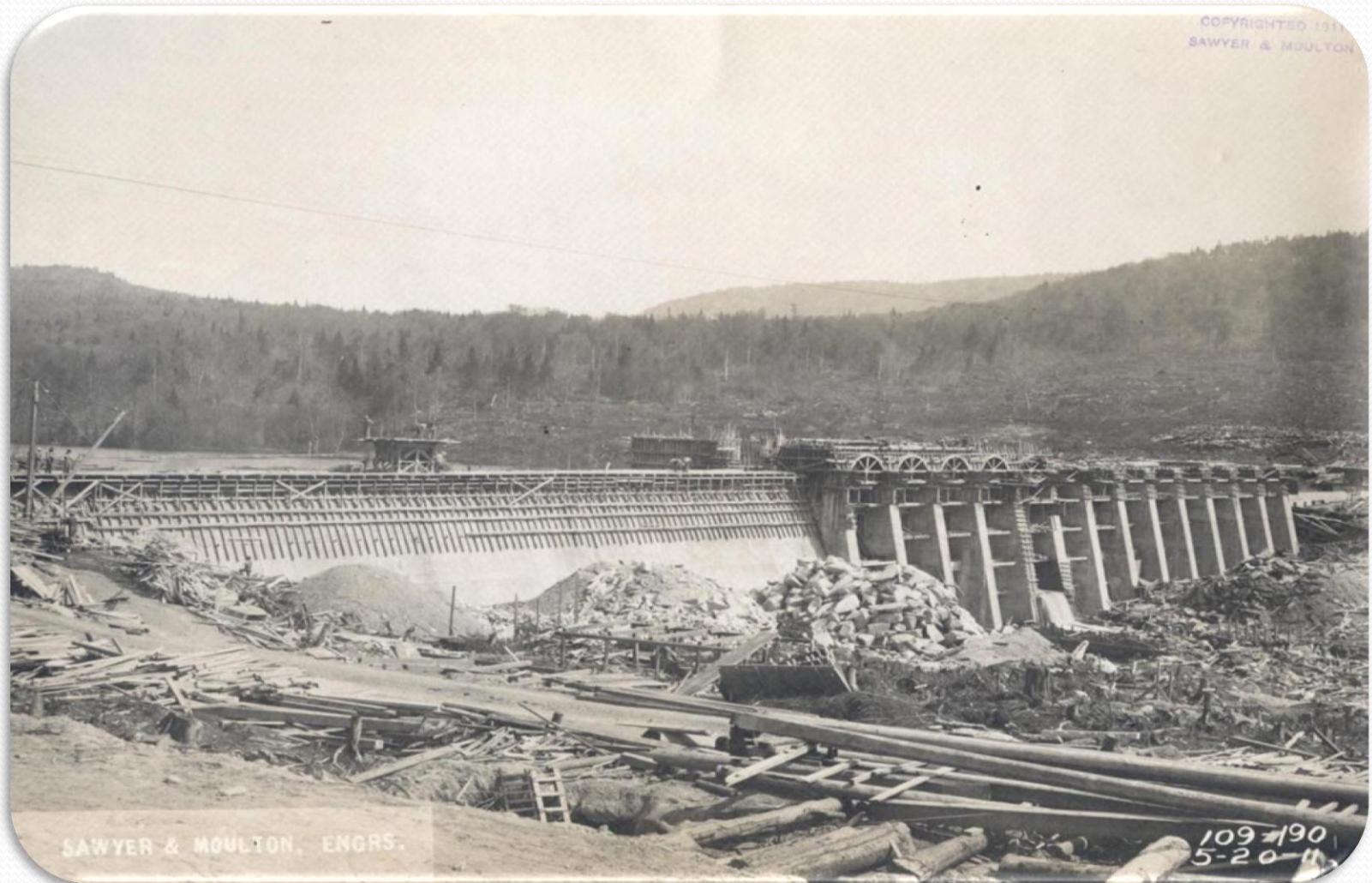


Looking northwest at upper face of dam. Lake level elevation 511.6  
May 6 1911





Looking southeast at dam. Lake level elevation 519 May 20, 1911



Abbott Brook dike looking northwest at core piling and sluicing trestle  
May 30, 1911





View from Abbott Brook dike looking southeast at over flowage  
May 30, 1911



Abbot Brook dike; hydraulic giant in foreground, new lake in background  
June 19, 1911



SAWYER & MOULTON, ENGRS.  
20 MAEB & MOULTON, ENGRS.

109-203  
8-19-11  
9-18-11  
103-503



Abbott Brook dike: looking south from borrow pit June 24, 1911



North from borrow pit, south of dam June 29, 1911

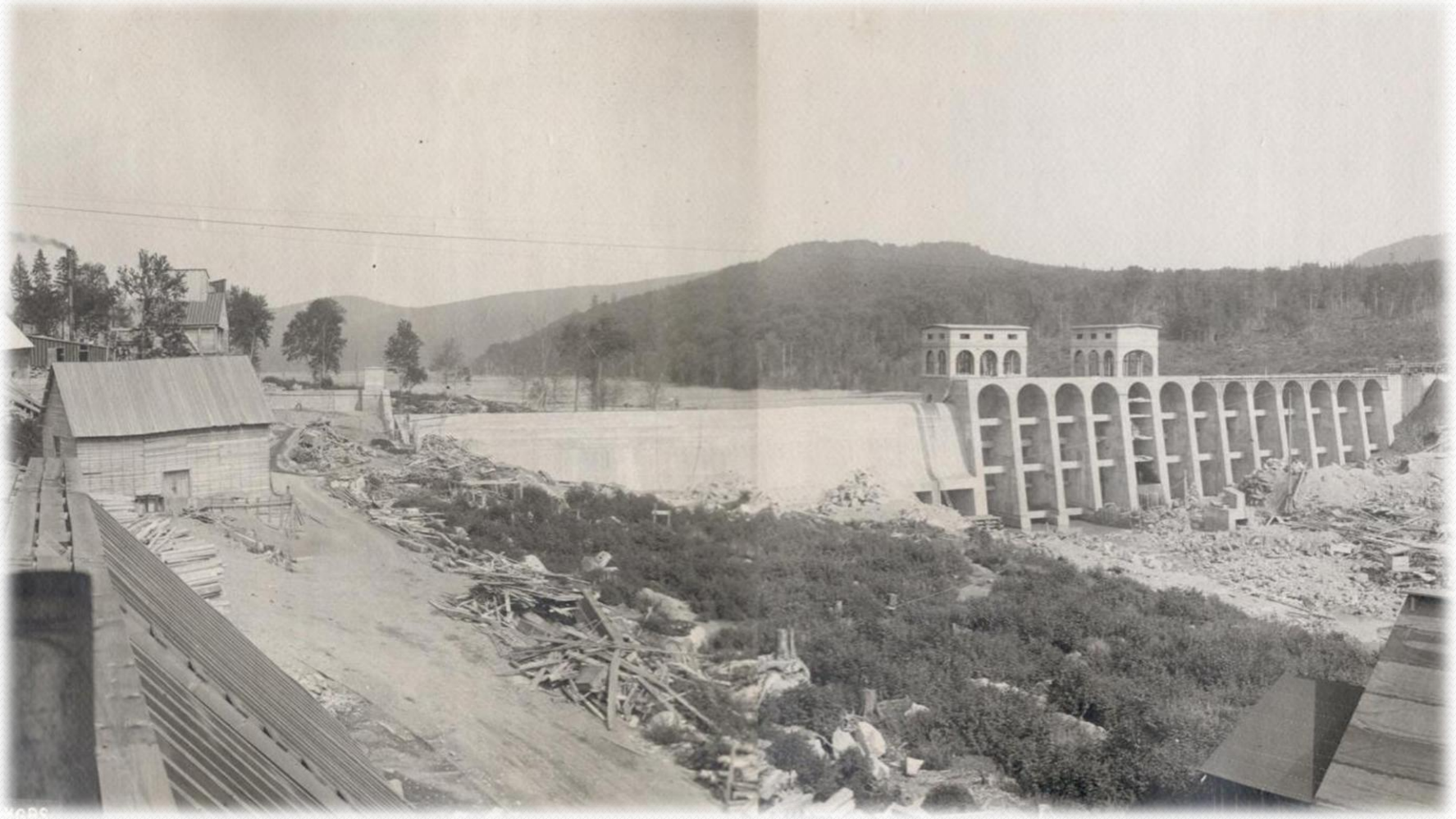




View from point below spillway looking south, showing sluice pipe for concreting the logway pier June 1911

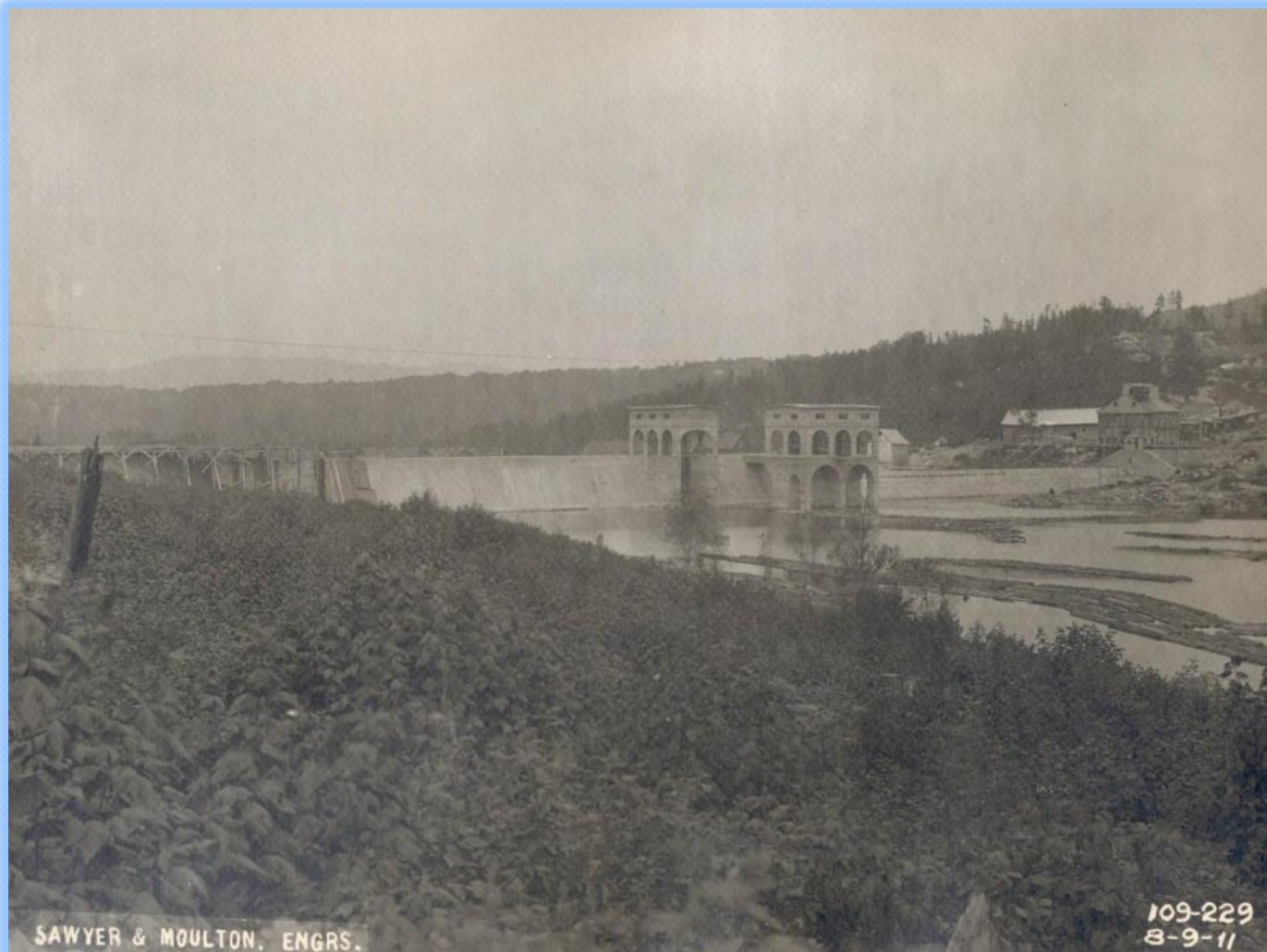


August 8, 1911





Looking northwest at upstream side of dam August 9, 1911



Looking east on line of log flume September 11, 1911





Abbott Brook dike: looking northeast September 1911



Abbott Brook dike: looking northwest September 28, 1911





Looking west on line of log flume from top of dam, water flowing from two full open cylinder gates November 11, 1911 , Armistice Day



Filling east side of Abbott Brook dike November 12, 1911



SAWYER & MOUTON, ENGRS.

SAWYER & MOUTON, ENGRS.

109-223  
11-12-11

11-15-11  
109-552



Filling west side of Abbott Brook dike November 12, 1911



General view looking east December 10, 1911





September 10, 1912 View of the new lake



AZISCOHOS DAM PHOTOGRAPHS.

\*\*\*

Mr. Herbert J. Brown.



# Aziscohos Dam

Thanks to all of those who helped by providing photographs as well as information.